

OpenPCS

Version 6.5.4

New Features

Fixed CRQs

2010/0578	LD: CTRL +SPACE adds underscore to variablename If SPACE is part of hot key for autocomplete , no conversion is don
2010/0580	Problem with online server having target not linked Avoiding multiple message boxes
2010/0537	Dropdownlist „data type“ is to small Dialog resized
2010/0535	Dropdownlist of target POU is to small Dialog resized
2010/0533	Syntax error messagebox blocks autodeclare window No syntax check before autodeclare
2010/0531	Enlarge the size of autocomplete window Width now depends on variable name size
2010/0530	Position of autocomplete-window Now depends on the position of the variable
2010/0540	Hotkeys for autodeclare in Ladder Can be selected by registry entries. Default Value CTRL-SPACE
2010/0520	Problem debugging ladder with bits of WORD variables Online values now available

OpenPCS 2008

Version 6.5.1

New Features

» **Optimized array access with native code for Pentium CPUs**

- **Requires native code compiler „ncc86_PentOpt_32.dll“ and SmartPLC Embedded runtime system version v7.0.0 or higher**

Fixed CRQs

2010/0472	Missing padtrtpsTS550.exe in openPCS 6.5.0
	Added padtrtpsTS550.exe.
2010/0471	Crash in openPCS 6.5.0
	When OpenPCS recognizes invalid project data, it will bring up a debug message
2010/0445	Crash of OpenPCS if searching for strings at output connectors
	Improved search/replace function.
2010/0444	CFC: -?- on outputs of compundblocks if followed by fbs or functions
	The values in the CFC editor will be shown correctly.
2010/0375	OpenPCS 6.4.2: save project cost too much time
	Speed improvement for graphics part, but not for declaration part.
2010/0369	FBD: Function Blocks aren't able to move
	There are no overlapped Function blocks in OpenPCS now.
2010/0367	FBD: OpenPCS crash while inserting a FB bigger than one rectangle (on the last row of a page)
	FBD-Editor will be customized for the function block.
2010/0362	using catalog to dragndrop into FBD
	Added drag&drop-function for functions/function blocks with compatability inquiry
2010/0226	Errorlog creation needs check whether required files exist
	Existence check for ErrorLog.bin and DateTime-checks
2009/0547	CFC: Compound Block Issues
	Compound Blocks are able to copy&paste to the first row, all Compound Blocks will be printed
2009/0413	FBD: code generation is in wrong order
	If there are direct margin connection(s) and return or jump block(s) within the same network, OpenPCS might generate IL code the user does not expect. Therefore we added a warning message for each affected network when saving file.

Fixed CRQs

2009/0144	OpenPCS loops forever
	When updating a subversion controlled project, OpenPCS hangs up.
2010/0479	Set Breakpoint in ST editor (F9 shortcut)
	Setting a breakpoint with F9 hotkey does not work
2010/0480	No intellisense while online edit
	During online edit the usage of intellisense is forbidden.

OpenPCS 2008

Version 6.5.0

New Features

- » **Auto Declare / Auto Complete**
- » **Optimized native code for Pentium**
- » **LREAL support in Ladder**

Fixed CRQs

2010/0351	Problems with global vars in variable table
	If MULTIVARTAB is switched off in ini file and there would be more variables a warning message will be displayed in the output window
2010/0350	Access on global array generates needless ADD_OFFSET Ucode
	In some cases a needless UCODE was generated
2010/0332	Crash on execution of concatenated native code segments
	A problem of concatenating native code segment with nccTMS320VC33
2010/0326	Double click on the resource doesn't generate it
	In some cases the makefile could not be read
2010/0279	Information on the Exclude from project option
	Information about "exclude from project" in help an manual
2010/0244	Importing a POU file prompts that the file is from an earlier version
	Dialog no longer necessary
2010/0243	Typo in Error Names
	Typo corrected
2010/0212	CONCAT_STRING does not allow blanks in direct inputs
	If string are used containing blanks wrong results have been calculated
2010/0195	Download command is ignored after invalid save system cmd
	If a previous Save System command failed the download of a new program was disabled
2010/0194	Exceeding available number of watch entries
	If multiple watch is used there will be a check to MAX_WATCH_ENTRIES before sending the command
2010/0187	watch values are not updated if CDA is active
	If CDA is running it took all the band width. Now in 200ms intervals watch data will be updated even the CDA communication is running
2010/0142	Function block declaration of GetDateStruct contains keyword
	Keyword removed from GetDateStruct prototype

Fixed CRQs

2010/0113	Forcing to save/compile/build everytime when re-opening
	In Ladder files a unnecessary size was stored that caused the compiler to rebuild. This entry was removed
2010/0060	CFC: incorrect Grid-calculation
	Deleting the last margin connector on an empty page caused a crash of CFC
2010/0058	CFC: Deleting of margin bars connectors (all selected)
	Margin bar entries are not deleted if selecting all (Ctrl-A) and delete
2010/0057	CFC: permanent selected margin bars
	Select all and then deselect: margin bars are still selected
2010/0052	Chinese comments are not working correct
	In a text block of the CFC Chinese comments sometimes displayed wrong
2010/0033	Printing immediatly in project browser
	Printing from the browser does not show the printer dialog
2009/0697	Delete comment font in CFC
	Font for text blocks in CFC set to Arial and faster drawing of large text blocks
2009/0572	CFC: Moving Textblock while typing at the same time produces weird graphics
	Editing now is prohibited while moving blocks
2009/0568	CFC: Textblock and Functionblock possible at the same spot
	In some cases it was possible to place a text block and a normal function block at the same grid position.

OpenPCS 2008

Version 6.4.3

New Features

Fixed CRQs

2009/0176	VAR OPC keyword does not work for structures in structures
2010/0066	Fbd functions blocks can be linked to active resource
2010/0079	Ip address in OpenPCS status bar is not updated
2010/0080	IEC61131 function MID() is not supported on SFC1XX
2010/0081	IEC61131 string operation only works in interpreted code
2010/0086	prevent of download vartab
2010/0092	download doesn't work correct
2010/0103	Default setting of division by zero in NCC PPC
2010/0255	moving files into subfolders in project-browser by drag&drop
2010/0260	cyclic restart of controller after online change in OpenPCS
2010/0274	Questions on 6.4.2 and ncc86_PentOpt.dll
2010/0286	Crash of OpenPCS when increasing variable size
2010/0116	Showing XRef list in a table

OpenPCS 2008

Version 6.4.2

New Features

Fixed CRQs

2009/0236	Inconsistency in variable allocation handling
2009/0575	Function returning a structure datatype in ARM native code
2009/0602	Rawfile folder is stored under incorrect path
2010/0002	wrong assignment between arrays
2010/0021	Error in compiling project with array of 16300 elements UINT
2010/0048	incorrect initialization of arrays
2010/0063	ncc x86 does not support MAX_FLOAT
2010/0076	Compiling an old project with OpenPCS 6.4.0 causes errors
2010/0090	Last variable in watchlist cannot be shown
2010/0108	errorhandler does not received compiler output
2010/0112	Variables under the Configuration Tree
2010/0135	Ladder: Set/Reset writes in all bits of the byte
2010/0136	"Automatic declaration of VAR_EXTERNAL" activates "Split editor window vertically" setting
2010/0137	Crash in DwIFinishResource
2010/0179	Empty Arrays in watchlist

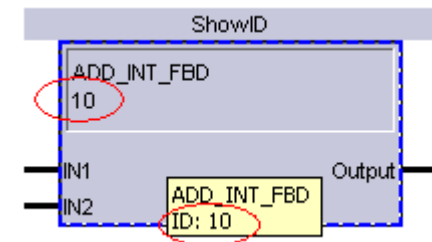
OpenPCS 2008

Version 6.4.0

New Features

» CFC Editor

- Functions, function blocks and connectors are now identified with a global ID which is shown inside the block and in a tooltip
- If you print a CFC chart connections running over several pages will be printed with indices/flags. An itemization of existing connection flags of the currently printed cfc plan page will be printed on the next/previous page
- You can now autofocus a CFC chart
- Print forms can be set and customized via a new dialog (Extras → Tools → Print Options)



Fixed CRQs

2009/0001	Resource-global FB instance is not shown in Resource-Pane
2009/0016	AddDriver doesn't copy xml and ini files from the hardware subfolder
2009/0016	test for something
2009/0112	x86 NCC - Alignment=4
2009/0112	x86 NCC - Alignment=4
2009/0118	cannot go online after compile
2009/0136	Native code crash with wrong configuration of the optimization
2009/0209	Problems with breakpoints
2009/0228	OpenPCS wants to download even if program has not been changed
2009/0253	Ressource Tab-icon doesn't change from cycle to oem-task-type
2009/0257	Variable crossreference have to be improved
2009/0259	Possibility to dissable automatic save of watchlist
2009/0260	Posibility for character displaying
2009/0267	Unable to watch structures which are passed by reference
2009/0271	External var in ladder file doesn't show comments
2009/0358	firmware function blocks
2009/0400	watch list in runtime system is not correctly cleared on logout
2009/0437	After offline Changes and entire undo anyway full download if going online
2009/0451	crash on open project while showing dialog

Fixed CRQs

2009/0494	Warning if segments size reaches maximum
2009/0499	OpenPCS 2008: Oscilloscope - Properties Trigger Delayed
2009/0500	OpenPCS 2008: TrendView Search Funktion
2009/0501	OpenPCS 2008: Oscilloscope Y(X1) n.Def
2009/0502	STRING seems unuseable with x86 ncc
2009/0544	Global variables shown in resource-pane at the "global-variables" node
2009/0552	Overview of different NCCs for development manual
2009/0554	combined tags of constant and another opc tag are not noticed by the compiler
2009/0562	"Save Watchlist" opens Save-Dialog which doesn't have the project dir as its initial directory
2009/0567	CFC: Adding of connections not possible at compound block
2009/0570	Online help is not complete
2009/0580	CFC/FBD: Plans should fill complete print form
2009/0586	Using padtrtps610.exe as postbuild step causes license error
2009/0590	FBD: type mismatch between declaration and FBD plan
2009/0606	SmartSIM should delete WatchEnable-Flag after loss of connection
2009/0608	Glob_Var section in program files has no effect
2009/0617	How does OpenPCS react near the memory limit?
2009/0622	automatic pointer test fails

Fixed CRQs

2009/0630	path error in itMake.exe
2009/0631	Error creating complete cross-reference list
2009/0633	highlighting of connection line if connector selected
2009/0634	Replacing compound blocks: losing input connections
2009/0668	Online Ladder function block does not show any values during variable status
2009/0669	Online Ladder Variable Status defers current watch values
2009/0682	variables declared in file variable having wrong values
2009/0742	undocumented compiler commandline arguments

OpenPCS 2008

Version 6.3.1

New Features

Fixed CRQs

CRQ 2009/0600	Writing array to wrong offset
CRQ 2009/0603	Possible to hot download with old target
CRQ 2009/0604	Wrong output in pcevars.txt

OpenPCS 2008

Version 6.3.0

New Features

» **Ladder Editor supports variable status**

- To avoid switching to UCODE while online, the ladder editor now supports variable status

» **Optimization of array access with constant index**

» **Keep values of forced variables after logoff**

- needs updated runtime system

Fixed CRQs

2009/0021	No line/column in status line
2009/0079	Special characters in ladder comments cause errors when saving
2009/0089	Edit - Toggle/Next Bookmark
2009/0090	Using Excel-files within OpenPCS
2009/0091	Start/stop buttons are dis
2009/0111	NCC's restore_data
2009/0145	ST editor 'leaks' new lines
2009/0149	LIMIT is missing in globprot.inc for smartsim
2009/0180	OpenPCS shows wrong „used watch entries“
2009/0185	LD: subdirectory in FB-Catalog should be hidden when glowrap.inc is empty
2009/0192	Create Persistency with Online Edit
2009/0256	Variable comments have to display easier
2009/0263 (2008/0174)	Compiler optimization for static structs and arrays
2009/0268	Ability to Download an entire program without stopping the PLC
2009/0287	forcing after offline
2009/0294	Possible implementation of a safe mode
2009/0374	custom tool ini is case sensitiv
2009/0382	Invalid array index of ARM NCC when using negative array ranges
2009/0386	Help for OnlineEdit in the OpenPCS manual

Fixed CRQs

2009/0395	CFC: crash when page down is pressed during rubber band selection
2009/0403	FBD: Short Cuts doesn't work
2009/0404	Backward compatibility for FBD files
2009/0407	CFC/FBD Grid doesn't work under windows vista
2009/0411	Copy + paste of FBs forces deleting existing once in CFC
2009/0412	Doubleclick on errors in output-window of CFC-files does not jump to the error position
2009/0414	FBD: formatting of numbers always is disabled in pop-up menu
2009/0432	Logical error in Double_to_XXX conversion with resource "speed only"
2009/0444	Width of ladder-diagram comments should be even
2009/0449 (2008/0120)	problem of variable visualization in ladder online-edit
2009/0463	incorrect range for TIME data type in online help
2009/0473	No undo/redo functionality in declaration editor
2009/0474	Updating shortcut shift+pagedown in FBD
2009/0475	Installing of newest driver for older OpenPCS doesn't occur error dialogue
2009/0478	incorrect auto test cases
2009/0480	variables are not retain although marked as retain
2009/0486	Elementary data types in online help
2009/0487	Shortcut Ctrl+C doesn't work in output-window of OpenPCS
2009/0488	TIME-constants in CFC

Fixed CRQs

2009/0505	ControlUnit: Despite error after SaveAll and Compile OpenPCS can be closed
2009/0510	Wrong result with LEFT and nested comparisons
2009/0512	OpenPCS crashes if more than 30.000 variables are used in ST
2009/0516	Compile Error: Max. structure size = 20kB?
2009/0522	ERROR: Installed OpenPCS version (6.3.0)
2009/0528	(CFC/FBD: Rubberbox, emty plan inserting text) Changes from P699 available for OpenPCS

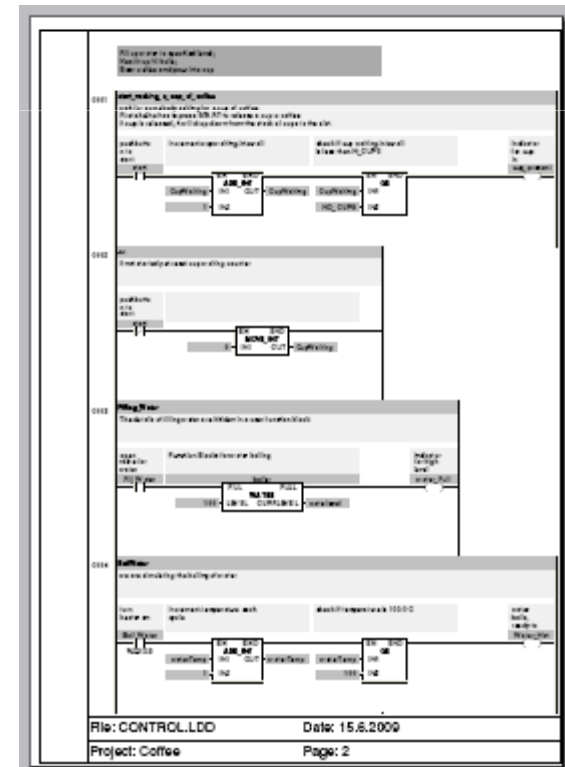
OpenPCS 2008

Version 6.2.0

New Features

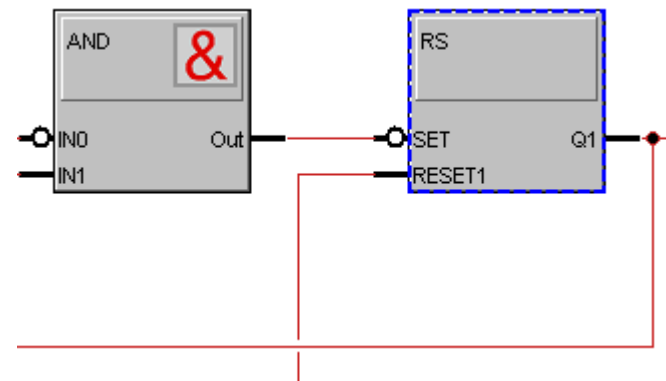
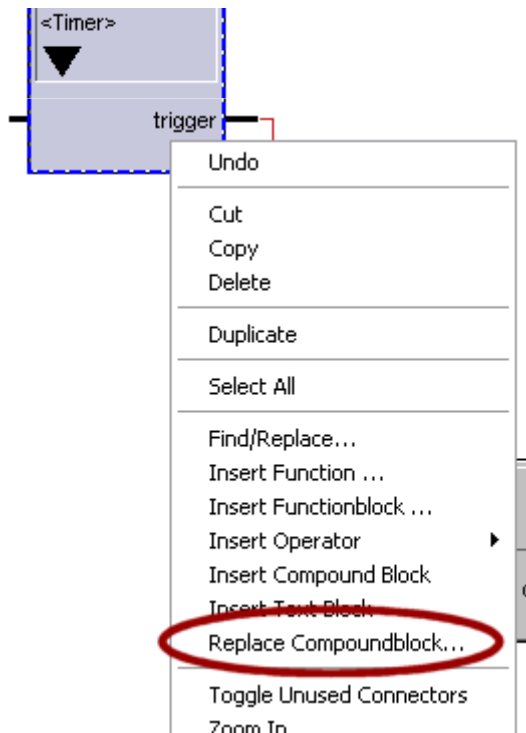
» Support of print forms

- Print forms now are based on SVG
- Print forms may be created by OEMs using a SVG editor like scribus



» CFC

- Replacing compound blocks by regular blocks
- Negate of all boolean inputs possible



Fixed CRQs

2004/102	Error messages are misleading if syntax errors in ST make IL creation impossible.
2005/659	FBD: "Wrong parameter type" error jumps to wrong input
2005/873	no form editor in OpenPCS
2006/0027	misleading error message when a function call is missing a parameter
2006/0028	compiler jumps to incorrect line
2006/0178	misleading compiler error messages
2006/0241	ST: syntax error when two comments in one line
2006/0350	Hotkey for Monitor/Edit
2006/0583	Menu->Window: Variable catalog is missing
2006/0648	warning number for "persistency file not created due to online linking"
2006/0679	Remote Interface extension: Get OpenPCS version (openpcs.exe)
2006/0917	combobox at hardware choice should be larger
2006/0927	Edit/Search: wrong dialog box for replace displayed
2006/0966	File-New-Dialog: field "Name" hasn't shortcut
2007/0078	Documentation of projects is deficient
2007/0224	New FBs cannot created in Online Mode
2007/0380	online mode: problems with large projects
2007/0400	FBD: constant values not visible in online mode
2004/102	Error messages are misleading if syntax errors in ST make IL creation impossible.

OpenPCS 2008 V 6.2.0



2008/0192	CFC: prints are very confusing
2008/0197	Invalid licence is reported with %s/%s
2008/0209	IL/ST: FB without outputs creates syntaxerror
2008/0213	marking of errors should be more highlighted than with carets
2008/0303	User Manual: separate licence to run compiler from command line
2008/0304	Function LEFT/RIGHT throws no error by using illogical return string length
2008/0309	Calling global FBs causes problems
2008/0346	Ressource tree shows invalid nodes for FBs
2008/0469	faulty ncc167h/PS611 release tests
2008/0476	computername in hw.ini from cabinet file not applied
2008/0495	LzsErrorMap.exe doesn't gets Arguments at all from OpenPCS 6.1.x
2008/0496	Files disappear when deleting folder containing opened files
2008/0507	Error in Automatic Testproject
2008/0509	Application crashes if selecting all in CFC Editor's "Level Up" Mode
2008/0510	rename of project cause wrong errormessage
2008/0512	misleading error message if required hw description is not installed
2008/0513	crash of ILC.exe with erroneous globprot.inc
2008/0526	'Negate Input' Entry is missing in CFC Editor
2008/0527	'Negate Input' Entry in Context Menu should be placed before 'Insert'
2008/0528	Toggle unused Connectors in Hide unused Connectors

OpenPCS 2008 V 6.2.0



2008/0534	unhandled empty segment assertion
2008/0567	placement of link to active resource
2008/0571	Wstring declaration in OpenPCS online Help
2008/0584	Output window of OpenPCS shows wrong information
2008/0585	Nested res-global FBs not shown in Resource Pane
2008/0588	Spelling failure in OpenPCS Help
2008/0592	Better error highlighting
2008/0626	FBD Code generation sometimes wrong
2008/0635	Setting Default Task Properties
2009/0014	document memory limits for IEC programs
2009/0026	Upload error with 4-byte-alignment
2009/0030	SmartSIM 32 MB
2009/0091	start/stop buttons are disabled after download
2009/0096	Crash of ladder editor on fast open/close
2009/0097	OpenPCS Help of SR/RS incomplete
2009/0115	LD cannot save in chinese XP
2009/0124	CFC: Use variables on different levels
2009/0128	Setting value after Online edit fails
2009/0130	Compliance Statement in online help

OpenPCS 2008 V 6.2.0



2009/0135	linker crash with resource global FBs and native code
2009/0143	Negation of integers not supported by ncc86
2009/0156	OpenPCS crashes when projects with 400 Hybridblocks are opened
2009/0160	Confusing error message in OpenPCS
2009/0162	preproject can not create project with alias tags in mapfile
2009/0166	online server crashes while applying online changes
2009/0169	Crash of firmware when applying online changes
2009/0171	Rename of variables to *status_* leads to compiler error in
2009/0172	bug in Preproject.exe
2009/0174	controller crash with specific project
2009/0178	values can not be set in watchlist after online change in OpenPCS
2009/0183	Internal variables get lost in cfc poe
2009/0194	Online Help doesn't work in extended working mode
2009/0198	Generation of x86 native code fails
2009/0200	Creation of large initial data segment
2009/0218	pceVars.txt in XML format
2009/0233	misleading compiler error messages
2009/0235	PLC general error" when removing a breakpoint
2009/0272	Drag&drop from catalog doesn't work with ladder
2009/0286	Chinese comments regarding declarations are displayed totally wrong.

OpenPCS 2008 V 6.2.0



2009/0292	error when saving LD-program
2009/0332	Creation of invalid challenge key
2009/0334	Ladder cannot be saved on Chinese Windows XP
2009/0378	Opened handle of build-log text file
2009/0392	pcsvars.xml is not a valid XML file
2009/0396	CFC: odd behaviour when doing selections by mouse (rubber band);
2009/0397	CFC: selecting many blocks for copy/paste is uncomfortable
2009/0401	VAR_EXTERNAL OPC is default wise not used for some HFB's (FDB,LDD,SFC)
2009/0402	linker error

OpenPCS 2008

Version 6.1.3

New Features

Fixed CRQs

276	Confusing error message in OpenPCS
212	OpenPCS crashes when projects with 400 Hybridblocks are opened
226	Program Hybrid Block with many blocks leads to an Runtime Error
522	online server crashes while applying online changes
279 598 599	Ladder cannot be saved on Chinese Windows XP
174	Chinese comments are displayed wrong

OpenPCS 2008

Version 6.1.2

New Features

Fixed CRQs

2008/0541	questions about the file copy function
2008/0530	Download cancels when using TCP432 Driver
2008/0529	Many MessageBoxes appear & OnISvr problems when Network Connection is unplugged
2008/0485	OpenPCS Printing Problems / Runtime Errors
2008/0374	FBD generates wrong code
2008/0557	OPC client cannot connect to HSE OPC server
2008/0373	Prototype entry of firmware FB is missing
2008/0496	Files disappear when deleting folder containing opened files
2008/0609	Setting real variables in watchlist

OpenPCS 2008

Version 6.1.1

New Features

- Fixed CRQs

2008/0441	NCC167h: Problem with reset arrays
2007/0393	FBD: MAX_REAL result is invalid
2008/0097	Wrong sorting of interrupt tasks
2008/0293	Wrong errormessage if file name is too long
2008/0302	OpenPCS 6.0.1 crashes if try to start the online mode
2008/0329	Network configuration message while downloading on SmartSIM
2008/0441	Problem with reset arrays
2008/0457	wrong bytesize on coldstart at the input strings
2008/0458	Multiple used local inputs are read from different places
2008/0459	CodeSize of Perform Sample

OpenPCS 2008

Version 6.1.0

New Features

» **Online Edit Enhancement**

- Variables in data segments that are changed keep their values on online change. To keep their values they should have the
 - » Same scope
 - » Same name
 - » Same type
- Requires SmartPLC/embedded update (v6.1.0)

■ Fixed CRQs

2004/678	COM-interface return wrong Type-information
2005/749	FBD: Append Input Connector do not work correct
2005/833	Unresolved external is better error tag as hardware configuration error
2006/0379	Watchlist gets cleared if connection is interrupted
2006/0727	Crash at large amount of global variables
2006/0771	Direct Globals in global POU raises wrong initial values
2006/0870	No warning while opening a POE out of two instances
2006/0894	String handling
2006/1002	Option for opening ActiveDocumentServer documents embedded
2007/0009	Multiple Dialog Boxes to confirm download
2007/0012	Drag + ctrl copy of text is not working
2007/0494	Executing PrepProject causes OpenPCS Crash
2007/0618	linked gdf's couldn't be unlinked from resource
2007/0619	Closing OpenPCS forces unlink gdf's
2007/0702	Incorrect check of COB-ID
2007/0757	wrong description of CTUD FB's in the documentation
2007/0793	Error in SFC editor of SoftPLC UI
2007/0813	Invalid Filename Message by closing the Restore Project Dialog
2007/0834	SFC: two transitions was set automatically with the same name
2007/0862	Unable to find a linked file after it was moved
2007/0886	Datotyp "Dint" is not available for new functions
2007/0937	OpenPCS Help: Save System in chapter of Error Logs
2007/0938	Mistakes in the OpenPCS help regarding CDA
2007/0969	CFC: direct I/O-Access works only with "VAR_Global"
2007/0980	Request for updating running PLC after rebuild active resource
2007/0990	cancel of save piv-file as ... create a message that no error occurred
2007/0991	Error of winregserver during the installation of OpenPCS on Vista
2007/1011	Copy/Paste of a FB in FBD inserts the name twice
2007/1016	Wrong execution of SFC-program using normal optimization

OpenPCS 2008 V 6.1.0



2007/1038	PLC->Download doesn't impact START/STOP in OpenPCS
2008/0004	Online values of bool variables should be in different colors
2008/0008	Empty ini files was created if the filename in Modules.ini is not correct
2008/0026	Import IL File search for *.IL instead of *.POE
2008/0031	Admitted time types in OpenPCS
2008/0037	Syntax error by using comments in ST Editor
2008/0040	SFC: Opening object properties by double click
2008/0045	Error message 1620 when going online
2008/0051	Ladder options use INI file in the Windows directory
2008/0064	CDA is enabled although there is no entry in .ini file
2008/0072	IEC non compliant names are possible
2008/0073	CFC Backup files weren't deleted on deleting cfc-plan
2008/0074	Missing mark under View/ Full screen for active full screen mode
2008/0076	Scrolling via mouse wheel isn't possible in ladder
2008/0087	Copy and Paste forces syntax error in i/o mappingeditor
2008/0092	SmartPLC does not support online edit
2008/0100	no executable for the EHSim connection defined
2008/0101	Byte Order error during IEC simulation
2008/0106	no structures if OPC qualifier is used
2008/0118	Compiler Output in statusbar
2008/0119	Connection is not displayed in resource properties
2008/0122	saving old CFCs doesn't start new il-codegenerate
2008/0130	Return from Fullscreen mode shrinks browser pane
2008/0131	OpenPCS 601 installation crashes on windows vista
2008/0132	Ladder colors customization
2008/0140	TUI items and header have wrong language

OpenPCS 2008 V 6.1.0



2008/0149	Online connection crashes during connecting to simulation
2008/0150	E: L12003: Writable access to this variable not allowed
2008/0151	Errors during registering of ConfOPC.dll
2008/0156	Error ConfOPC on build empty st file
2008/0157	Syntaxerror when clicking on R/O in .piv files
2008/0161	Wrong OpenPCS help for RS functionblock
2008/0162	Linker error but project is executable
2008/0167	Auto Var External does not work
2008/0168	deleting tasks during the online mode
2008/0170	Search in files does not work in ladder files
2008/0175	Wrong docu for function "INSERT" in OpenPCS help
2008/0196	Cannot create projects with names of Functionblocks
2008/0204	CFC Toolbar Icon "Insert Compound Block" is misleading
2008/0205	Difficulties when looking for PLC that is online
2008/0206	Wrong version string in license request e-mail
2008/0214	CFC: Crash after insert compound block and undo
2008/0215	Wrong subject in OpenPCS registration mail
2008/0227	Missing readme in Coffee-sample about Genesis32
2008/0243	OpenPCS help: Error at CTD-FB
2008/0253	Help for CDA and TFR is missing
2008/0254	OPC-Server help still exists although the sever is disused
2008/0262	CRD crash with large projects
2008/0266	COFFEE: readme file in genesis32 subdirectory
2008/0268	Own Libs disappear when uploading
2008/0270	Ladder Monitor Edit doesn't work
2008/0272	OnISvr error accessing code repository

OpenPCS 2008

Version 6.0.2

■ Fixed CRQs

2008/0039	CFC: local variable loses initial value when moved in margin bar
2008/0051	Ladder options use INI file in the Windows directory
2008/0132	Ladder colors customization
2008/0157	Syntaxerror when clicking on R/O in .piv files
2008/0162	Linker error when using SINT in assignment editor
2008/0167	Auto Var External does not work

OpenPCS 2008

Version 6.0.1

New Features

(see Version 6.0.0)

■ Fixed CRQs

2007/1020	Version-dependent Prog IDs
2007/1021	Version-independent Prog IDS
2007/1027	Ambiguous version information in OpenPCS
2007/1032	OnlineServer and OpenPCS needs the whole CPU
2006/0723	Nested function calls
2006/0938	easier methode for mapping
2007/0277	Win Vista: piv-files are not workable
2007/0560	Under VISTA the Ladder Diagram is hardly readable
2007/0576	Online server gets frozen
2007/0584	Laddereditor warning: firmwarefunction is defined twice
2007/0589	Invalid PDO mapping error message from Powermap
2007/0747	When network in pm is deleted, appropriate dcf files are still available
2007/0748	DCF is created on wrong Place, when no network is selected
2007/0781	"GENERATE CONNECTION" fails when attempting to build RPDO's
2007/0808	SupportApp.exe packs the whole root directory
2007/0819	crash of OpenPCS when insert function with context menue
2007/0823	Trying to connect single PDO with Copley leads to crash
2007/0843	OEM-Command causes Online Server malfunction
2007/0848	Wrong mapping with xenus7.dcf
2007/0853	Ressource Download crashes, with SystecSimulator
2007/0854	Numbering of created PDO's

■ Fixed CRQs

2007/0875	rename file should show which file is renamed
2007/0906	PDO COB-ID's must be set by slave Node ID only and never by PLC node ID
2007/0914	Adding XENUS after WAGO causes error 1504
2007/0918	CDA-Viewer as context menu entry for watchlists is missing
2007/0920	Server names are displayed inconsistently for local and remote servers
2007/0927	Worsening of display online values in CFC by OpenPCS 5.5.0
2007/0933	PowerMap behaves differently, depending on the order of mapping
2007/0936	COB-IDs of Transmitter and Receiver should match for PDO pairs
2007/0940	PowerMap: DCF-files are shown in file pane
2007/0964	PowerMap: Matrixview shows nothing
2007/0978	CDA should not have an extra instance-tree
2007/0984	Wrong Numbering if default PDOs of C-14 SPS deleted before creating PDOs with PowerMap
2007/0988	Contextmenuentry for CDA at watchlists
2007/1000	Invalid license during the installation of a cabinet file
2007/1002	Crash of OpenPCS during opening a ST function block
2007/1003	crash of OpenPCS after change focus from declaration window to an other
2008/0046	Runtime error with PrepProject.exe
2008/0062	Number of segments differs between rebuild and going online after source change

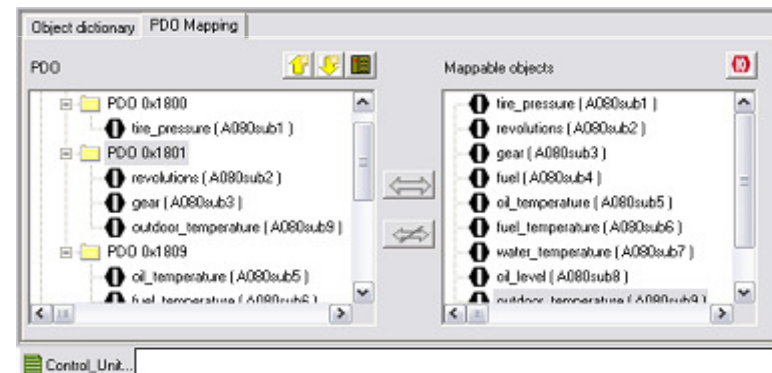
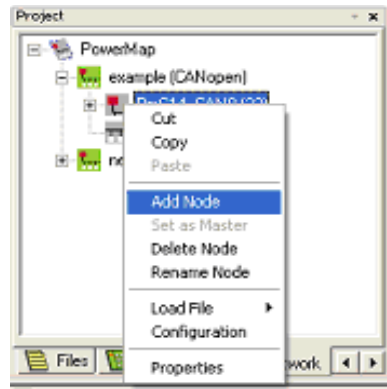
OpenPCS 2008

Version 6.0.0

New Features

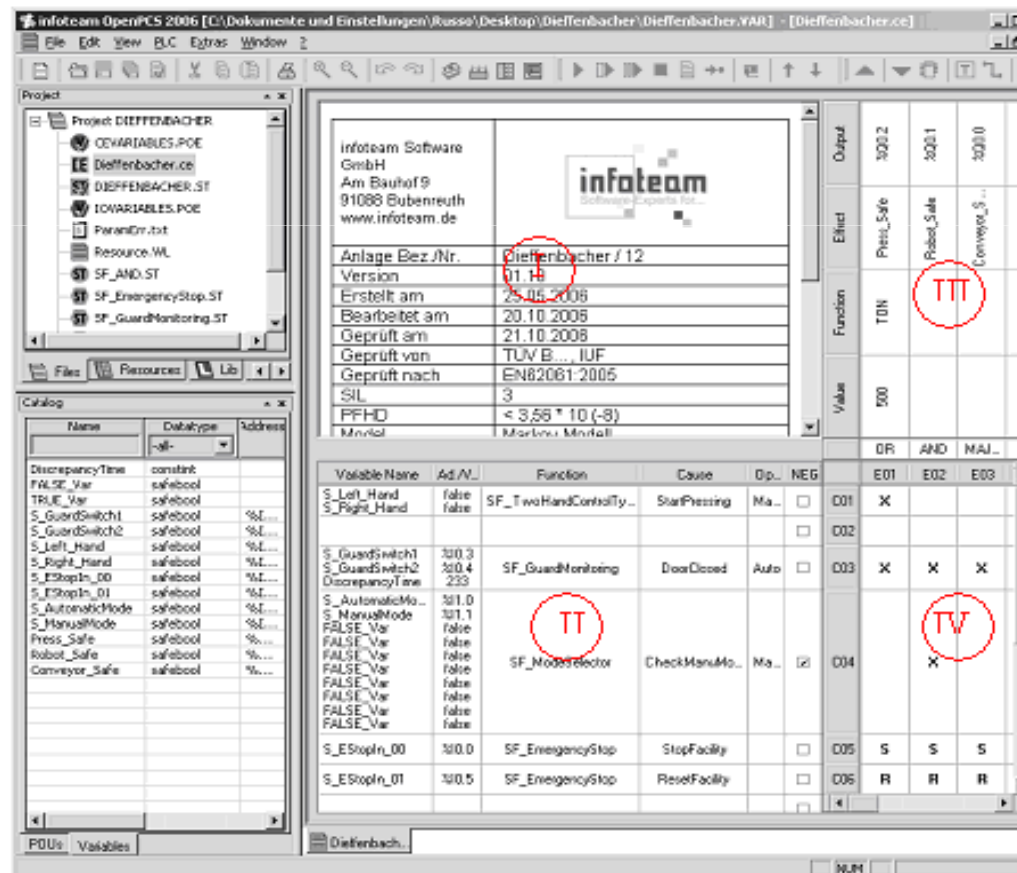
» PowerMAP

- CANopen network configuration tool for OpenPCS and SmartPLC with CANopen extension
- See PowerMAP manual for more information



» Cause and Effect Editor

- New editor for writing programs with cause and effect methodology



The screenshot displays the Cause and Effect Editor interface. The central metadata table includes the following information:

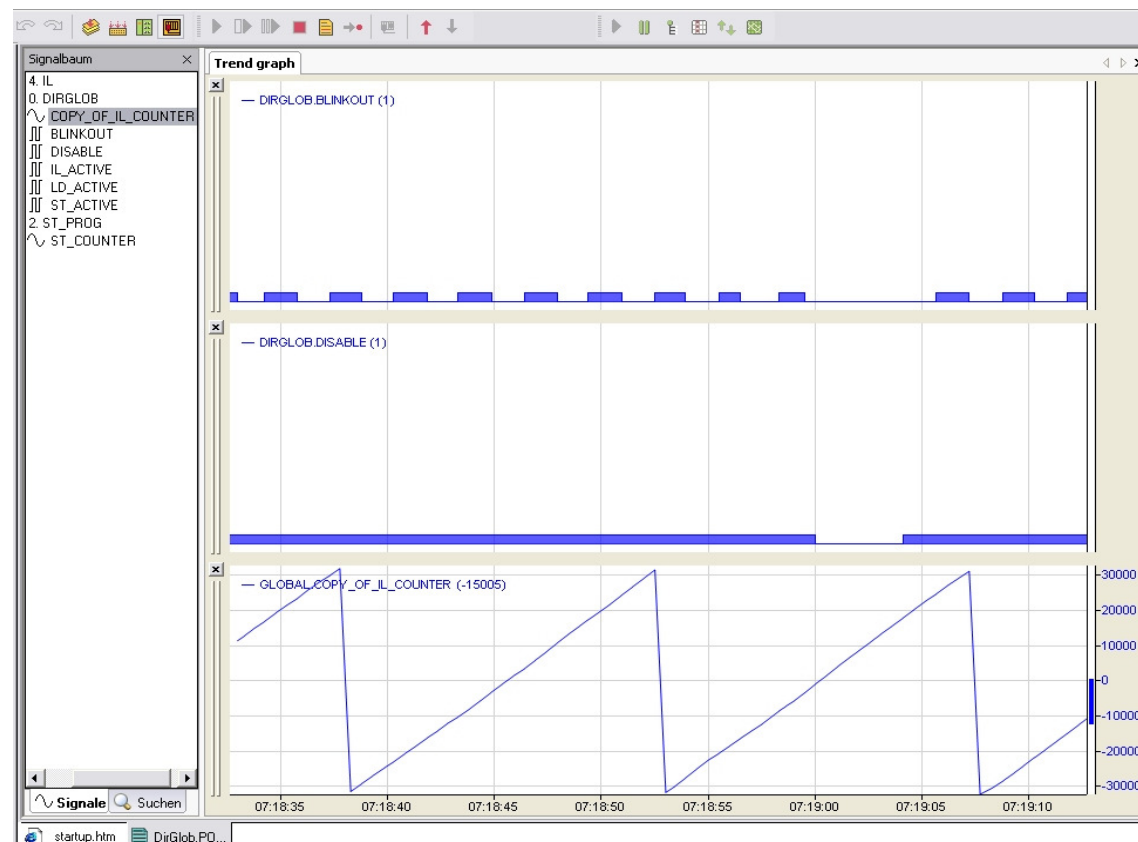
infoteam Software GmbH	Am Bauhof 9	91088 Bubenreuth	www.infoteam.de
Anlage Bez./Nr.	Diiffenbacher / 12		
Version	01.14		
Erstellt am	23.05.2008		
Bearbeitet am	20.10.2008		
Geprüft am	21.10.2008		
Geprüft von	TUV B... IUF		
Geprüft nach	EN82061:2005		
SIL	3		
PFHD	< 3,55 * 10 ⁻⁸		
Mitglied	Merkel/Merkel		

The Cause and Effect table below shows the relationship between variables and their effects:

Variable Name	Ad./N.	Function	Cause	Op.	NEG	Output	DR	AND	MAJ.
						E01	E02	E03	
S_Left_Hand	false	SF_TwoHandControlTy...	StarPressing	Ma...	<input type="checkbox"/>	001	X		
S_Right_Hand	false	SF_TwoHandControlTy...			<input type="checkbox"/>	002			
S_GuardSwitch1	300.3	SF_GuardMonitoring	DoorClosed	Auto	<input type="checkbox"/>	003	X	X	X
S_GuardSwitch2	300.4	SF_GuardMonitoring							
DiscrepancyTime	233								
S_AutomaticMo...	301.0	SF_ModeSelector							
S_ManualMode	301.1	SF_ModeSelector	CheckManuMo...	Ma...	<input checked="" type="checkbox"/>	004		X	
FALSE_Var	false								
FALSE_Var	false								
FALSE_Var	false								
FALSE_Var	false								
FALSE_Var	false								
S_EStopIn_00	300.0	SF_EmergencyStop	StopFacility		<input type="checkbox"/>	005	S	S	S
S_EStopIn_01	300.5	SF_EmergencyStop	ResetFacility		<input type="checkbox"/>	006	R	R	R

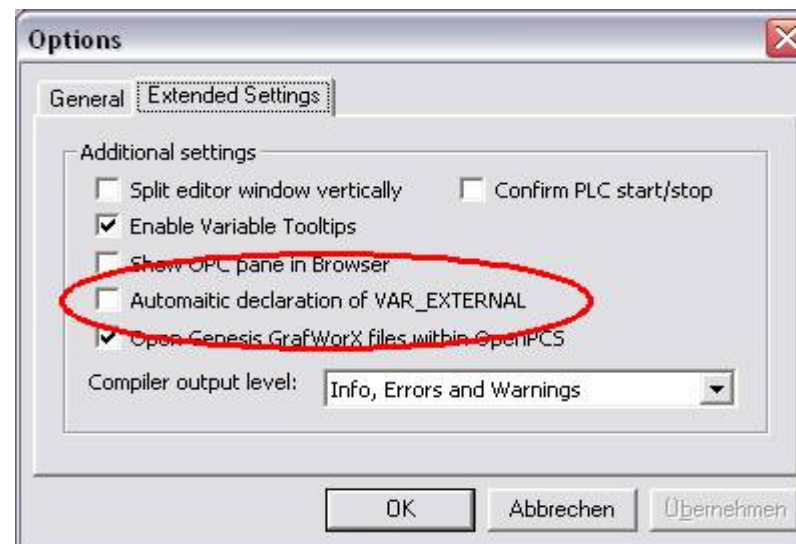
» Control Data Analyzer

- With OpenPCS 2008 and an extension for the runtime system called Transient Fault recorder, chronological sequence of variables can be viewed



» Auto Declare

- With this option resource global variables used in a POU are declared automatically as VAR_EXTERNAL.
- This is available in the editors for: FBD, Ladder and ST

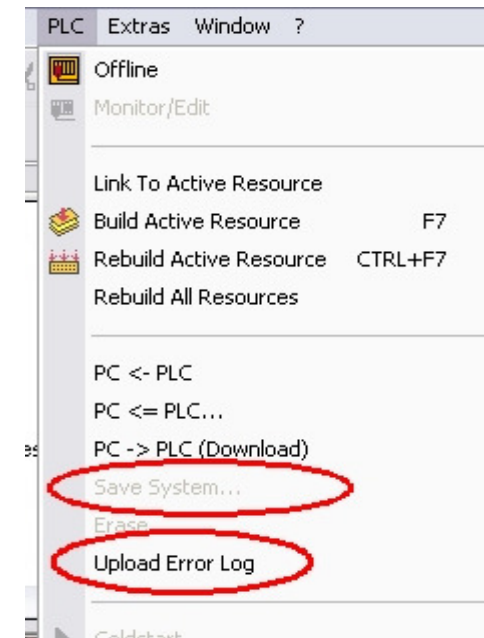


» Upload Error Log

- Uploads a error information file from target system. This is shown in OpenPCS Browser. This feature is optional and depends on the hardware you are using.

» Save System

- Saves the program running on the controller to some persistent area. This feature is optional and depends on the hardware you are using.

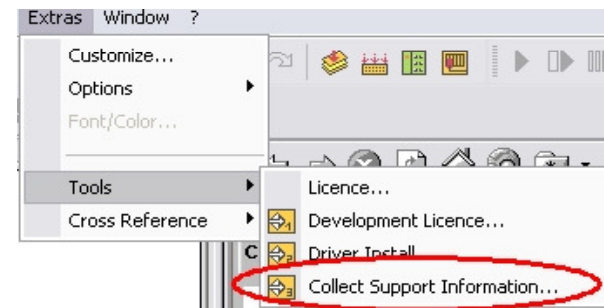


» Project Menu

- All menu entries belonging to project have been moved to a new main menu entry „Project“

» Collect Support Information

- Collects information for infoteam supportline to help solving problems



■ Fixed CRQs

2004/590	Data in Scope column should have changed/moved.
2004/317	PIV editor: DEL does not work
2005/103	menu entry DEL is disabled
2006/0513	OpenPCS crash when to many programs are open
2006/0593	FBD starts at network 2
2006/0603	Improve compiler output of FBD
2006/0735	Online server crashes on struct or array request
2006/0896	OpenPCS is unable to compile project
2006/1015	Upload: dialog should open again if the directory isn't available
2007/0013	„Move network up“ in FBD deselect network
2007/0040	executing batch from OEM driver
2007/0125	Missing function jump to AWL-Line in OpenPCS 5.4.1
2007/0195	Kontextmenue entries missing in CFC
2007/0200	CFC Online Edit do not apply changes to project
2007/0201	Missing function on key "DEL"
2007/0277	OpenPCS stopped working when open a PIV file (Windows Vista)
2007/0326	Linker crash when changing PIV folder in active resource
2007/0330	Wrong serialisation on new CFC-plan
2007/0357	CFC: "Edit/Properties" menu item is always disable

OpenPCS 2008 V 6.0.0



2007/0358	CFC: wrong values by input of an add function creates no warning message
2007/0360	follow a connection didn't work using the context menu
2007/0367	encrypt library creates errors
2007/0374	REAL-Arrays can be declared even if REAL-type is disabled
2007/0468	Erroneous focus change when importing a FB from catalog
2007/0488	Missing documentation for CAN-FBs
2007/0504	Menu entry "replace block" is disabled
2007/0506	Missing context menu entry "go to next data destination"
2007/0525	update of FB-catalog
2007/0529	variable forced in TUI even though variable not exists
2007/0541	LREAL documented as "not supported"
2007/0548	Menu item "Edit -> ReplaceBlock" not available
2007/0582	Crash when opening project
2007/0586	OpenPCS 550 crashes when fast unlink -> uninstall a LIB
2007/0589	Invalid PDO mapping error message from PowerMap
2007/0590	Browser is gone in OpenPCS 5.4.4
2007/0596	Search in files shows lines that do not exist
2007/0597	msgbox: "file was changed" some parts in german
2007/0601	wrong position of menu entry "search in file"
2007/0603	Opened *.POE-files cannot be searched with "search in project"
2007/0604	The symbols which are on the FB's don't look nice
2007/0611	"insert IEC-variable" dialog deletes existing variable in FBD marginbar

OpenPCS 2008 V 6.0.0



2007/0612	Context menu entry „Go to next data destination“ is missing
2007/0614	„Form Feed before Network“ is missing
2007/0615	double assignement of variables in CFC forces Crash
2007/0617	„link to active Ressource“ is always checked on *.gdf-files
2007/0618	linked gdf's couldn't be unlinked from ressource
2007/0626	Missing question on creating new PIV file
2007/0627	CFC "Insert IEC-variable" -> cancel, forces rebuild of ressource
2007/0631	Missing .INI entries in current SmarSim
2007/0637	Search in project builds empty lines in output-window
2007/0640	OPC Watch accepts incorrect file paths after an error message
2007/0653	OpenPCS 5.5.0 can't install a CAB file that require Version 5.4.3 or later
2007/0668	OpenPCS show ncc compile error in ST
2007/0678	link to "what's new" does not work
2007/0681	file extension in MAK-file
2007/0707	ReleaseNotes not available
2007/0709	Compilererror: incorrect alignment for address
2007/0736	POUs should be forced to project location folder
2007/0744	Different output after rebuild between OpenPCS 5.3.2 and 5.4.3
2007/0746	FBD Inplace-syntax-check-> error but data-syntax-check->no error
2007/0755	Syntaxcheck causes SaveError and after restart internal FatalError
2007/0758	CFB/FBD Input int, output string, but in documentation explained the other way
2007/0761	Limit_Int_FBD causes syntaxerror

OpenPCS 2008 V 6.0.0



2007/0773	linker crash if global variable is not defined
2007/0776	installation of the library from the CAB file
2007/0782	PIV file is ignored by linker
2007/0808	Supportup.exe packs the whole root directory
2007/0815	Task properties show a interrupt task named "TIMER", which is not existent
2007/0819	crash of OpenPCS when insert function with context menue

OpenPCS 2006

Version 5.5.3

■ Fixed CRQs

2006/0075	Build will lead to inconsistency by resource global FBs
2007/0326	Crash of linker when moving file to other folder
2007/0653	OpenPCS 5.5.0 can't install a CAB file that require Version 5.4.3 or later
2007/0681	File extension in MAK-file
2007/0773	Linker crash if global variables is not defined
2007/0839	OpenPCS 5.4.3 breaks down, while deleting project from resource
2007/0852	Complete program crashes while starting smartplc.exe
2008/0001	Persistence version mismatch when upgrading target system to 5.5.0

OpenPCS 2006

Version 5.5.0

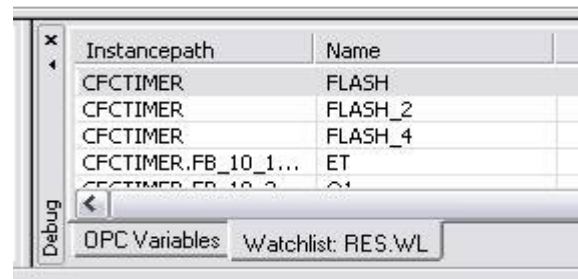
New Features

» OPC Watch Window

- OPC tags can be watched in one tab of the debug window

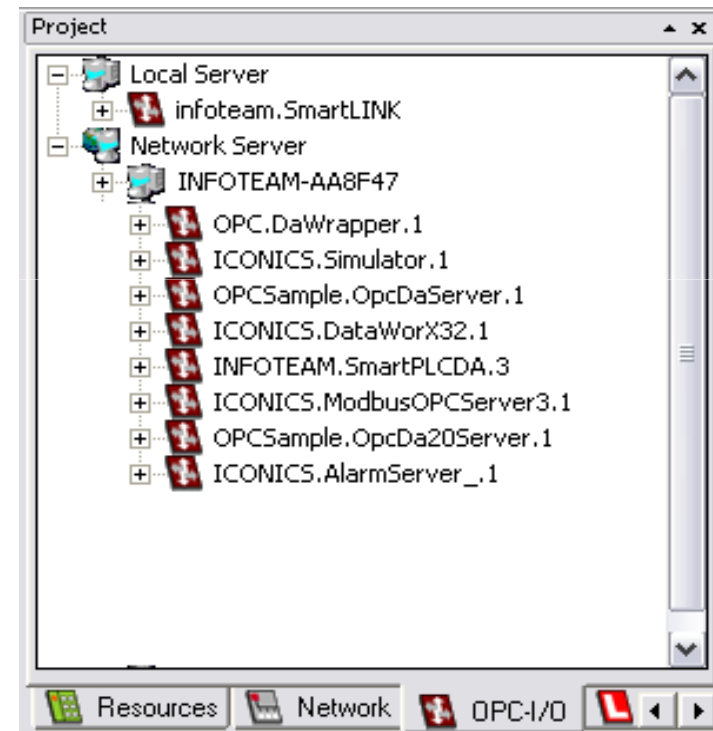
» Watchlist name displayed in T&C Tab

- The name of the active watch list is displayed in the tab of the Test & Commissioning



» OPC Browser can access remote OPC-Server

- OPC Browser can use DCOM



» Full Screen Editor Mode

- With Ctrl-Enter the editor uses the complete window of OpenPCS.
- Browser, output and catalog window are hidden until another Ctrl-Enter

» OPC Server

- The OPC Server, delivered with OpenPCS is no longer available.
- Use SmartLINK OPC Server instead. For more information please contact [infoteam](http://www.infoteam.de)

■ Fixed CRQs

2004/590	Data in Scope column should have changed/moved.
2006/0513	OpenPCS crash when too many Programs are open
2004/690	Link to active resource: context menu is inconsistent
2005/867	no index observance at access on arrayelements in NCC 86
2006/0124	SFC: cursor positioning is wrong
2006/0215	Del doesn't work everywhere
2006/0877	Problem with inconsistent POEs
2006/0896	OpenPCS is unable to compile project
2006/1015	Upload: dialog should open again if the directory isn't available
2007/0004	Compile error in FBD if parameters are not part of formal parameter list
2007/0040	executing batch from OEM driver
2007/0125	Missing function jump to AWL-Line in OpenPCS 5.4.1
2007/0200	CFC Online Edit do not apply changes to project
2007/0201	Missing function on key "DEL"
2007/0223	COMException with OpenPCS Remote Interface
2007/0322	invalid namespace for variables in powermap
2007/0326	Linker crash when changing PIV folder in active resource
2007/0330	Wrong serialisation on new CFC-plan
2007/0356	CFC: "Go To IL" is always disable
2007/0358	CFC: wrong values by input of an add function creates no warning message

OpenPCS 2006 V5.5.0



2007/0367	encrypt library creates errors
2007/0430	TUI can't be selected via Alt-3
2007/0488	Missing documentation for CAN-FBs
2007/0493	PadtOnlineServer.idl and Online Server crash
2007/0511	PIVs could not be linked per context
2007/0531	PS544: OEM driver does not installed

OpenPCS 2006

Version 5.4.4

New Features

» Windows Vista

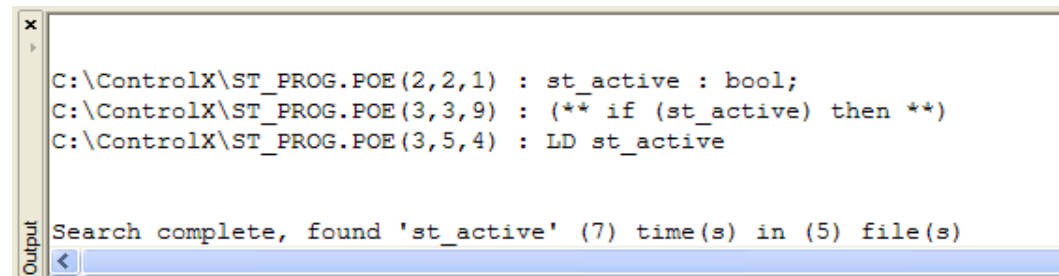
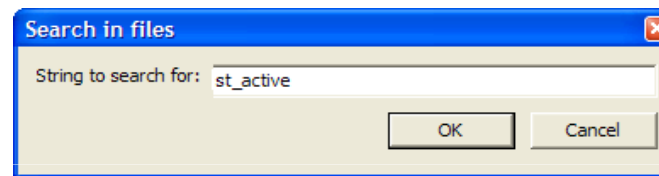
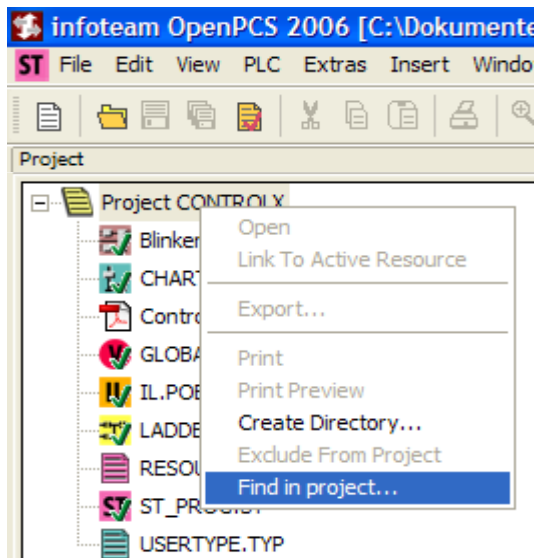
- Windows Vista is supported now
- Application data of OpenPCS is stored in the ProgramData directory (Win2000/XP: „Documents and Settings\All Users\Application Data“)

» Online Edit with resource global POU's

- Changes in global declaration files can be applied online with the Monitor/Edit function

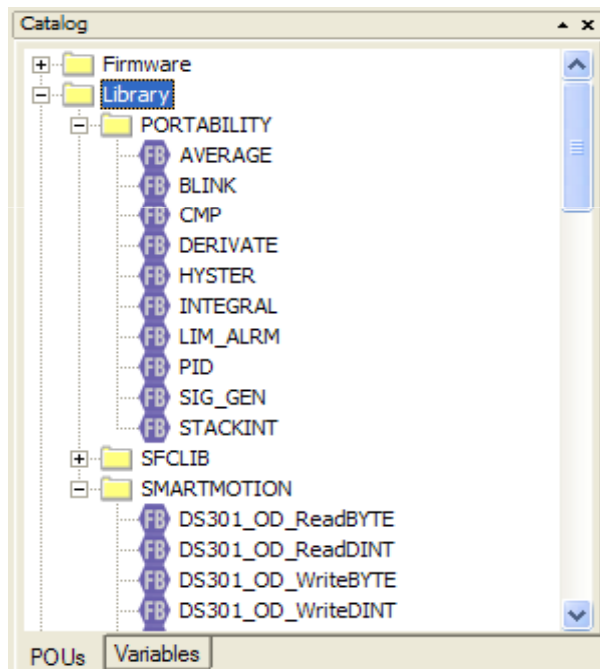
» Search in files

- Search through all the POU's in the current project



» Catalog: library subtrees

- POU's from libraries are structured by library name in the catalog



» Save window positions

- All window positions and sizes are saved when closing OpenPCS and restored when restarting OpenPCS

» Embedded ActiveDocumentServer documents

- A registry setting controls if ActiveDocumentServer documents are opened embedded in OpenPCS or externally
- Key: HKLM\SOFTWARE\infoteam Software GmbH\OpenPCS\\Settings\DisableActiveDocumentServer

■ Fixed CRQs

2004/735	error with two files with the same name
2005/910	no error message after declaring a constant twice
2005/911	problem by linking, content of constants are missing
2005/926	double defined constant takes value from another variable
2006/0290	Extras -> Crossreference -> variable is missing
2006/0483	Splitting library function blocks
2006/0554	FBD Find/Replace-Dialog: no default button defined
2006/0745	System crash with ARM NCC on Xscale
2006/0902	cataloge display subfolders collected
2006/0944	output of compiler should be stored in a file
2006/0951	Copied projects losing connection information on different machines
2006/1002	Option for opening ActiveDocumentServer documents embedded
2006/1014	PC<==PLC creates crash if no upload information is available
2007/0010	POUs in catalog disappear when opening Insert-Funtionblock in a FBD File
2007/0077	Online Edit of global declarations will be declined
2007/0108	Double assignment of variables in different POEs
2007/0140	Delete key not working in declaration window
2007/0142	Search of term "catalog"
2007/0163	DwIRawFile causes hang-up of Online-Server with high CPU-load
2007/0165	OpenPCS support for Windows Vista

OpenPCS 2006 V5.4.4



2007/0166	no string-functions are document in help
2007/0192	Multiple hardware descriptions with same OemDevice name
2007/0209	Crash on 'Open all' in project consistency check
2007/0221	Change "Internal PCD error" message
2007/0227	CFC editor: Top-Level-Chart is not visible anymore
2007/0241	add type definition examples to online help
2007/0242	CFC: margin connector variable of user defined type is not stored correctly
2007/0245	XRL file of Englisch OpenPCS is in German
2007/0275	Can't go online after GetReceiveDataStatus(): Timeout
2007/0280	Force state gets lost after online edit
2007/0285	error message not described in manual
2007/0318	Settings of panels get lost after restart
2007/0346	error handling of division by zero in ARM native code
2007/0351	rebuild when no modifications are made and switch into online mode
2007/0353	set on a bit variable in speed/normal crashes
2007/0361	FB Catalog: no help for RTC/GetSystemTime/SetSystemTime FB
2007/0377	prototypes in program creates OpenPCS crash
2007/0404	Invalid FB-name in POE
2007/0423	CFC: online edit button is disabled
2007/0427	FBD serialization failed
2007/0461	CAN-Open key "DELETE" has no effect

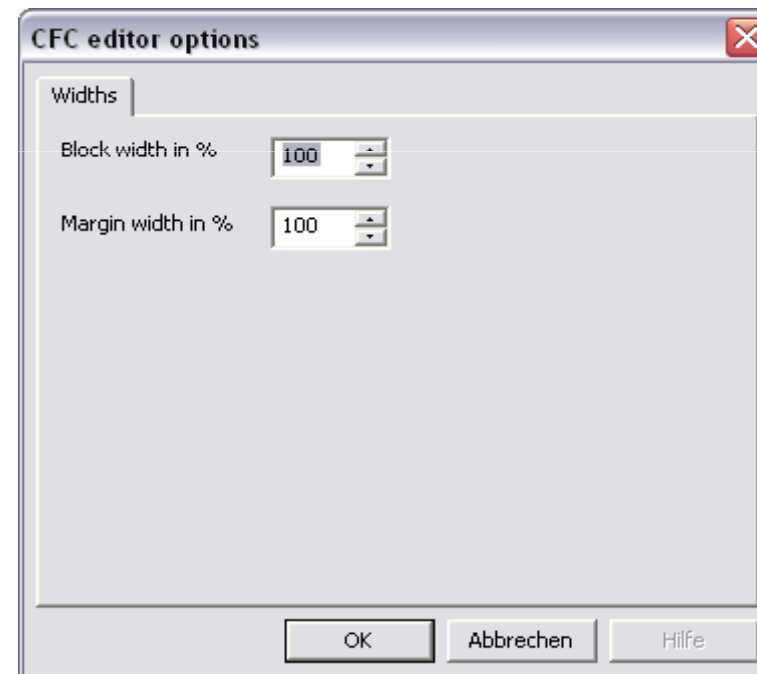
OpenPCS 2006

Version 5.4.3

New Features

» CFC:Block- and Marginbar width

- The width of blocks and the margin bar in CFC can be set by menu Extras->Options->CFC editor



■ Fixed CRQs

2006/0850	double click at CFC margin bar opens the old catalog
2006/0852	CFC: path of crossreference XSL should moveable over registry
2006/0853	SaveAll is called by closing with compiling
2006/0856	Exit dialog: "Abbrechen" should replaced through "Änderungen verwerfen"
2000/0860	Diction of catalog
2006/0931	online values are not displayed in CFC
2007/0044	Error code S6005: limitation of function blocks
2007/0050	Don't close OpenPCS on error in control unit
2007/0051	CFC: place FBs more efficient
2007/0092	29838: Syntax check not available after ST online
2007/0093	PLC Online: variable names not displayed

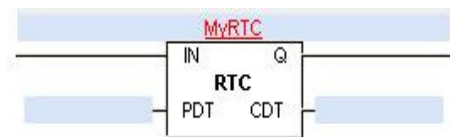
OpenPCS 2006

Version 5.4.2

New Features

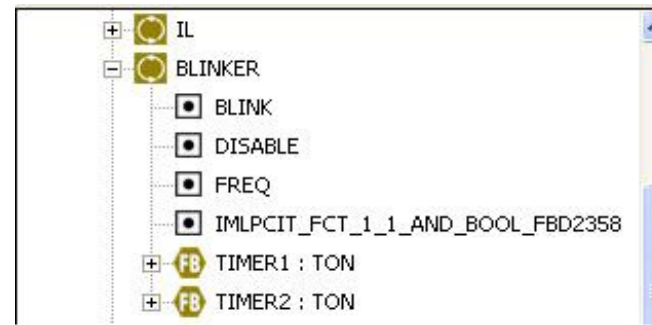
» New data types DATE, TIME_OF_DAY, DATE_AND_TIME

- The compiler is able to manage these data types.
- Requires Runtime System v5.4.0 or higher
- Standard Function Block RTC
- Additional FBs Set/GetSystemDateAndTime

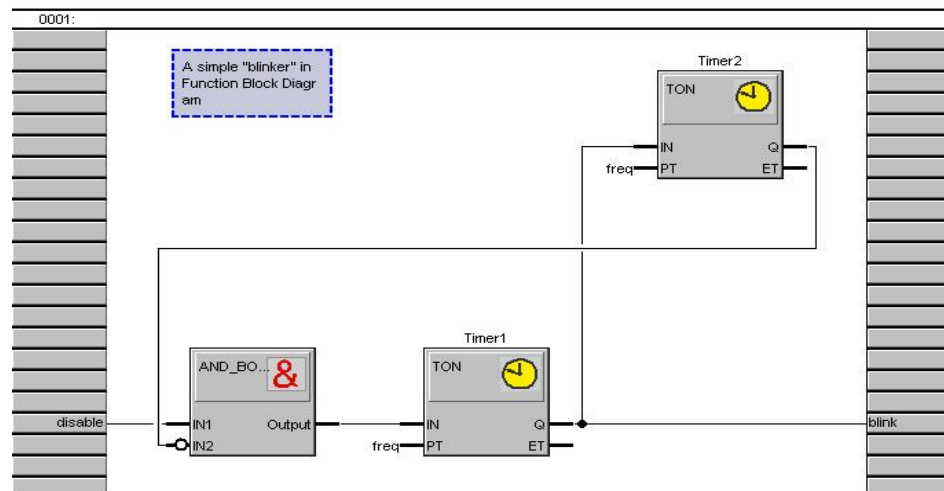


- These data types and function blocks are not available in SmartSIM

» In the instance tree all variables are sorted alphabetically



» Symbols on blocks in FBD



» Extended Variable Table Filtering

- To enhance filtering of variables for variable table a new keyword is introduced
 - » VAR OPC
- All variables of VAR sections marked with OPC are written into the variable table
- These variables are exported to the SmartLINK OPC Server

■ Fixed CRQs

2005/577	Datatypes: DATE, TIME_OF_DAY and DATE_AND_TIME
2005/791	crash by opening CFC plan
2005/878	poor Help for Upload
2005/952	no variable-crossref in Extras/Cross Reference
2005/993	PrepProject creates a second empty program
2005/A1060	ability to use a startup.html for every project
2006/0065	OpenPCS 5.0.2: compiler gives an error message when speed only referring to bits in a byte
2006/0097	Unsupported datatypes for RTC FuntionBlock
2006/0195	delete of force TUI entry
2006/0290	Extras -> Crossreference -> variable in instance tree
2006/0361	Improved Ladder Program preparation support
2006/0375	Set VARTAB filter in OpenPCS instead of ini file
2006/0449	GetErrorDescription is called when OpenPCS is closing
2006/0480	Show size of VARTAB
2006/0551	Update LIB section in FBcatalog when a lib is linked
2006/0615	source information from FBs should be transfer on controller
2006/0616	unreadable FBD files
2006/0671	Copying array contents causes runtime system crash
2006/0740	list of instance variables should sorted alphabetically
2006/0785	OpenPCS V 5.2.2: in a function block diagram copy a involved function block program crashed

■ Fixed CRQs

2006/0807	Filedamage while uploading big projects
2006/0841	press F2 to show edit mod missing
2006/0846	FBD:validation errors
2006/0847	User FBs aren't displayed in library tree and context menu
2006/0849	imported FB isn't available
2006/0855	CFC: delay of margin bar tooltip
2006/0894	String handling
2006/0930	5.4.0: compiler does not translate old projects
2006/0931	online values are not displayed in CFC
2006/0942	no jump to input area for instance as you doubleclick on a big FB in FBD
2006/0960	Picture for FBD Blocks
2006/0981	OpenPCS show not all the OPC Tags from the local OPC Server
2006/1046	replace of unknown FBs is impossible
2006/1063	problem with license
2007/0015	FBD editor sporatically doesn't show declarations
2007/0016	Bit address on margin bar gives error message
2007/0043	CFC:wrong AWL-code generation
2007/0048	Silent Uninstall shows dialog
2007/0058	DCF compatibility with OpenPCS 5.4
2007/0063	Runtime error while mapping to OpenPCS

■ Fixed CRQs

2007/0064	OpenPCS 5.4.0 crashes by link to active resource
2007/0086	Problems with PostSetup.reg at installation
2007/0124	Crossreferencelist doesn't work
2007/0135	linker uses wrong map file (PIL10001755)
2007/0137	shifting up/ down in ressource crashes OpenPCS